

ALS500T-RMW, ALS500T-DBR, ALS500T-SWM

RECESSED INDIRECT LIGHTING SOLUTIONS



Lighting for the Professional Designer



**WE PARTNER TO
HELP REIMAGINE
YOUR NEXT
DESIGN.**

INTRODUCING THREE NEW LIGHTING SOLUTIONS.

Refining cove design with ambient indirect glow, wider distribution, comfortable vertical illumination, ease of installation, and more.



ALS500T-RMW

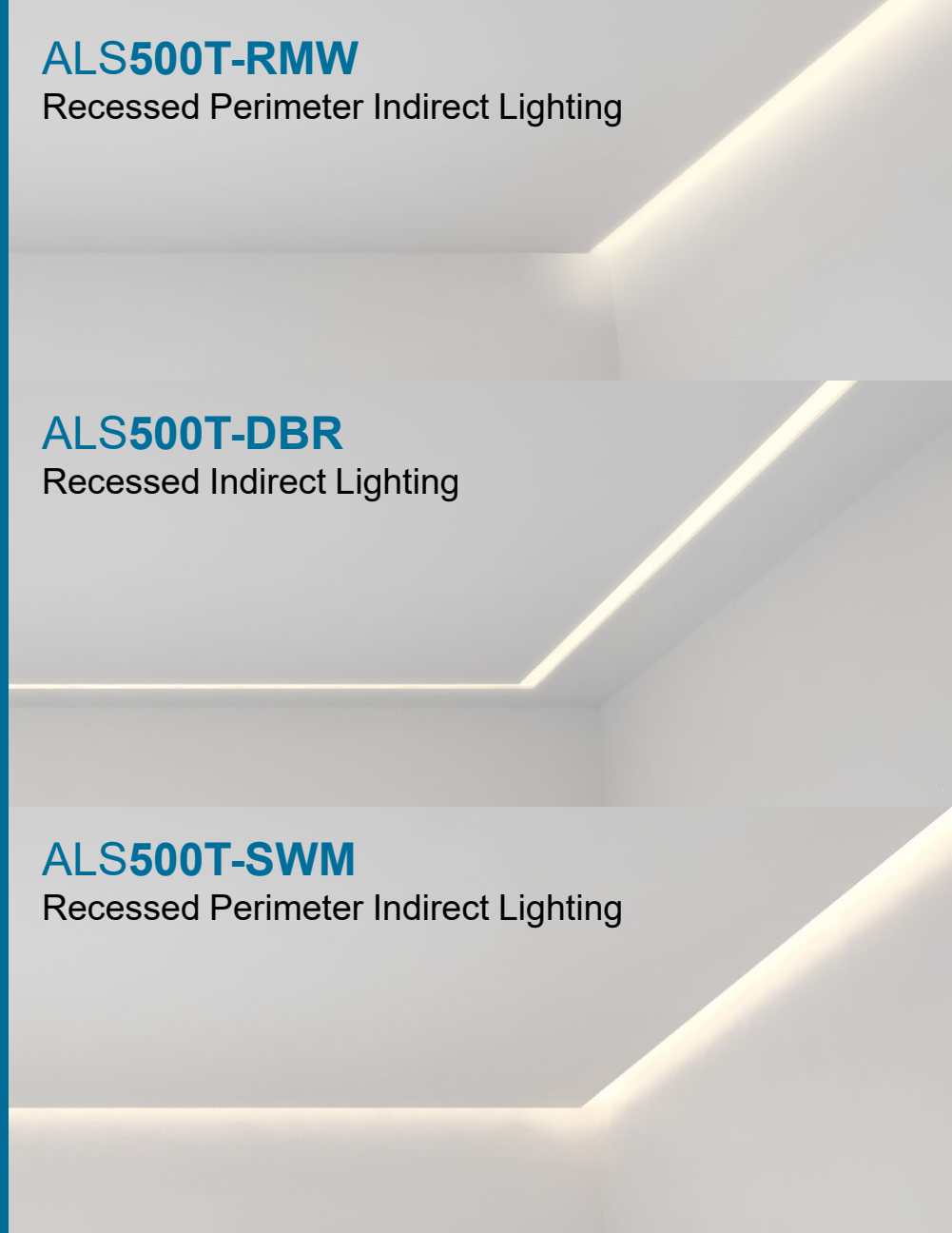
Recessed Perimeter Indirect Lighting

ALS500T-DBR

Recessed Indirect Lighting

ALS500T-SWM

Recessed Perimeter Indirect Lighting



FEATURES

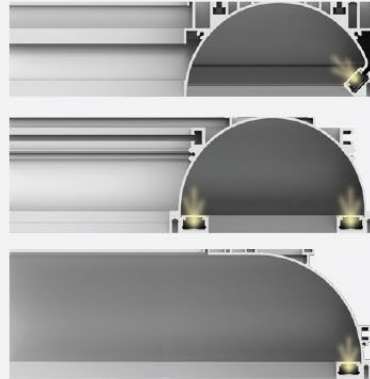
Our distinguished new luminaires present innovative features that elevate their performance and value, bringing you the most unified refined look with indirect even illumination.

NO EXPOSED LENS

No Light Leakage

No Lens to Fall Out

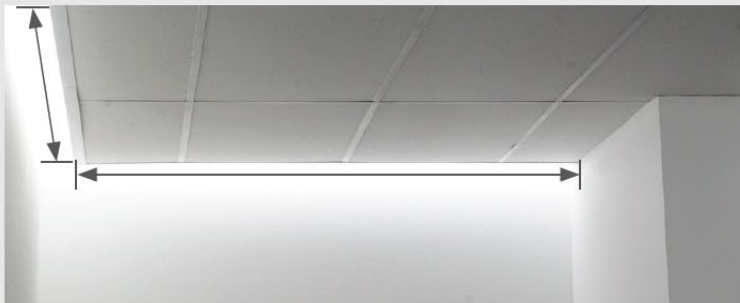
No Color Shift or Yellowing Caused by Exposed Lens



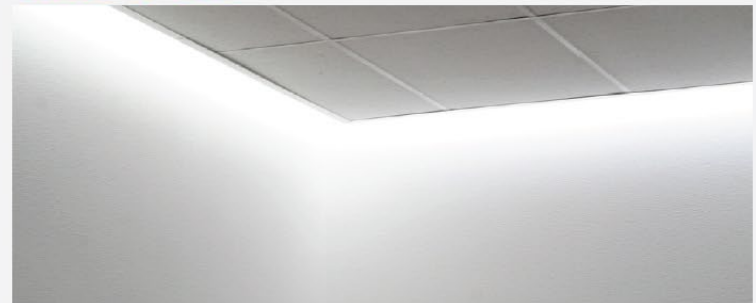
EVEN ILLUMINATION



BUILT TO EXACT LENGTH



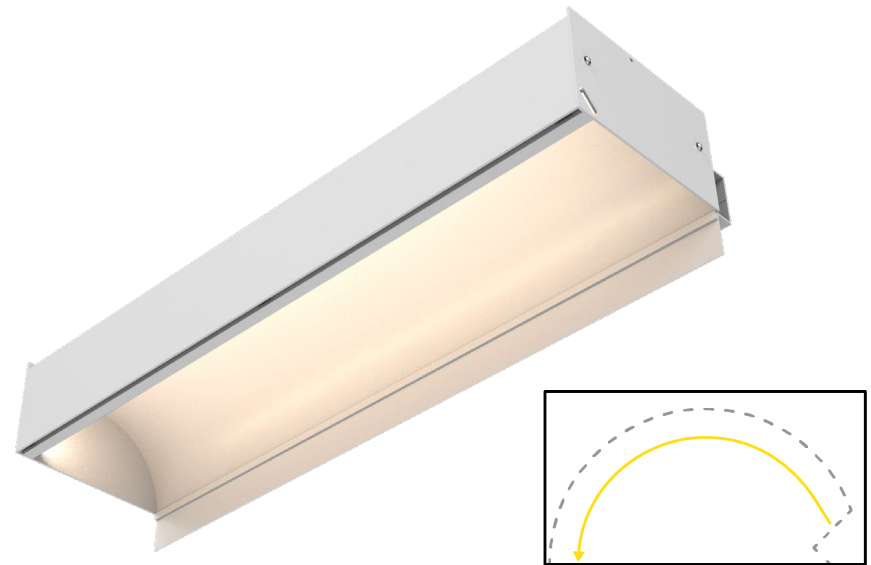
FACTORY-BUILT CORNERS WITH NO DARK SPOTS



ALS500T-RMW | RECESSED PERIMETER INDIRECT LIGHTING



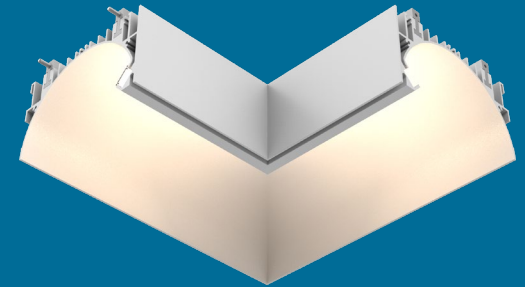
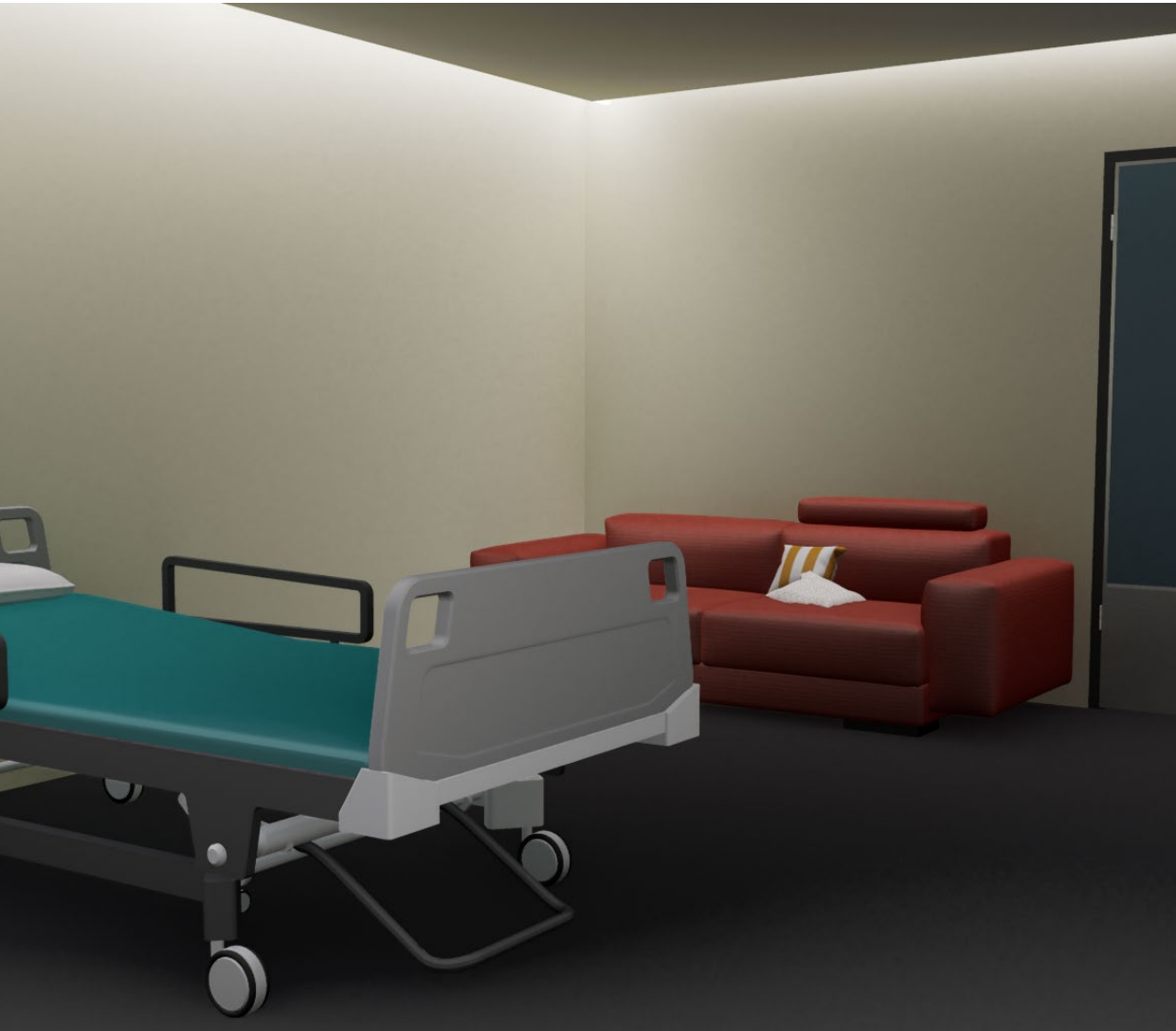
- Indirect, recessed, linear lighting system with ~5" visible opening.
- Reflector pushes the illumination further down the wall for a wider light distribution.
- Trim options allow integration into dropped hard ceiling, T-Bar grid, or mud-in (plaster) ceilings.



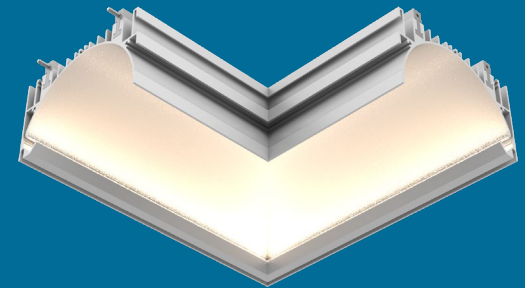
ALS500T-RMW | RECESSED PERIMETER INDIRECT LIGHTING



ALS500T-RMW | RECESSED PERIMETER INDIRECT LIGHTING

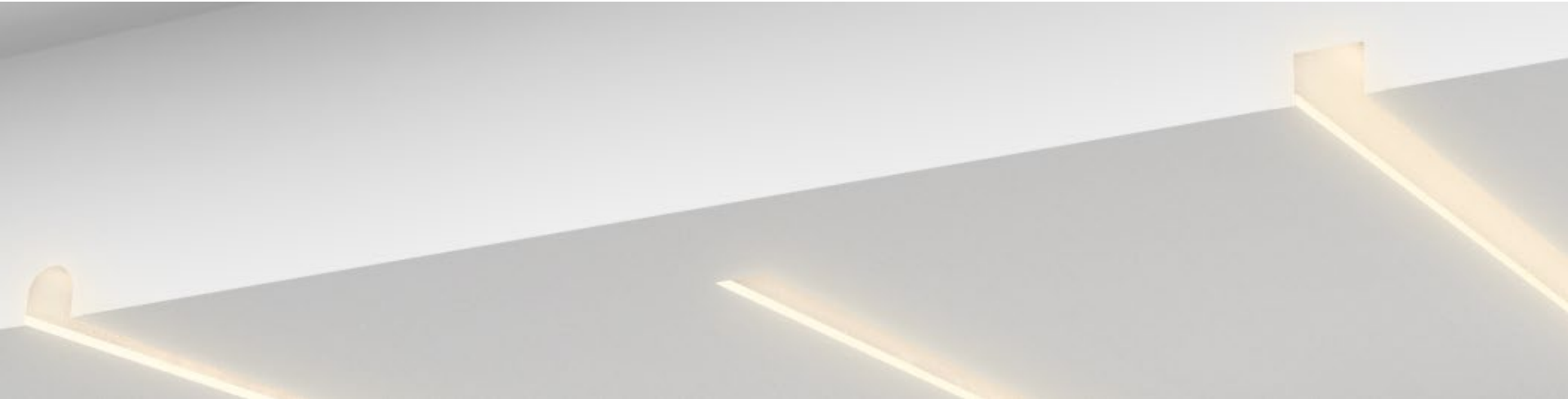


Internal Mitered Corner

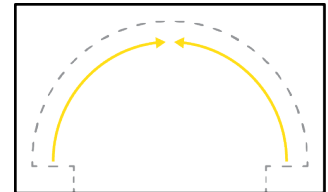
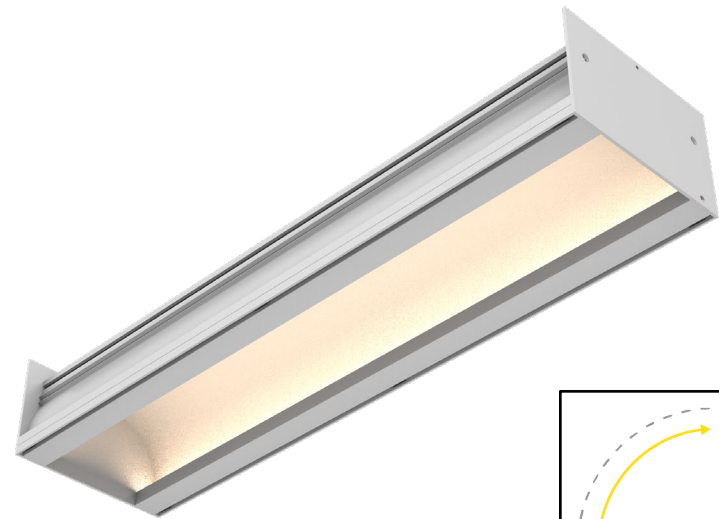


External Mitered Corner

ALS500T-DBR | RECESSED INDIRECT LIGHTING



- Indirect, recessed, linear system with dual light source and approximately 3-5/8" visible opening.
- Indirect lighting reduces glare and improves light uniformity compared to direct view.
- Trim options allow integration into dropped hard ceiling or T-Bar grid.



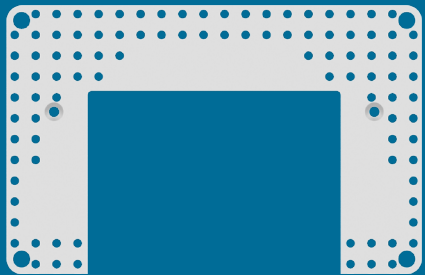
ALS500T-DBR | RECESSED INDIRECT LIGHTING



ALS500T-DBR | RECESSED INDIRECT LIGHTING



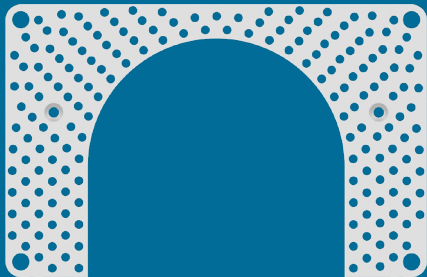
ALS500T-DBR | RECESSED INDIRECT LIGHTING



Square Opening
Mud-In End Cap



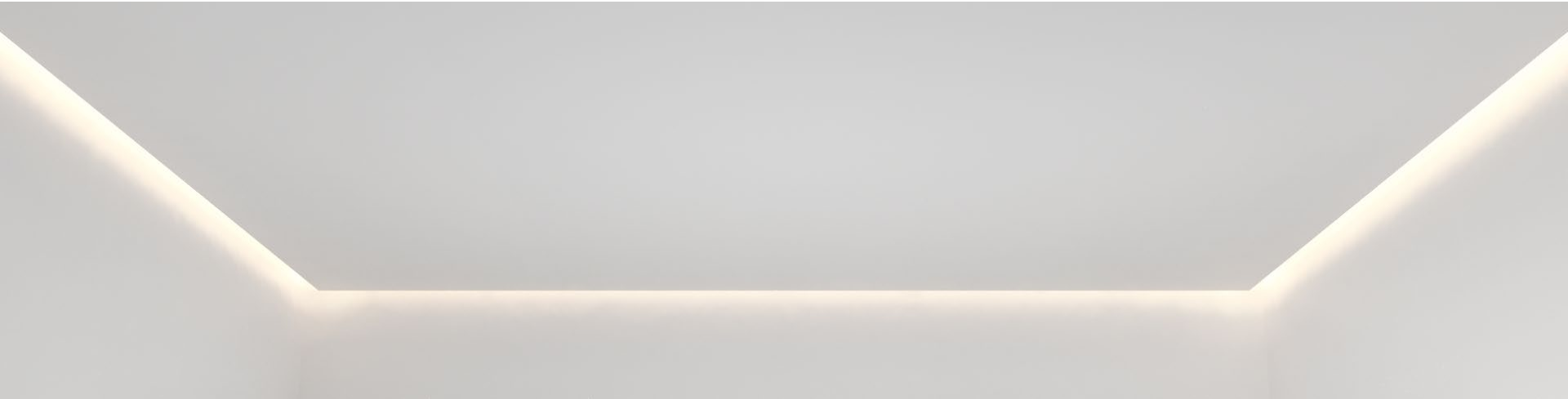
ALS500T-DBR | RECESSED INDIRECT LIGHTING



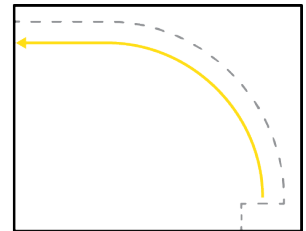
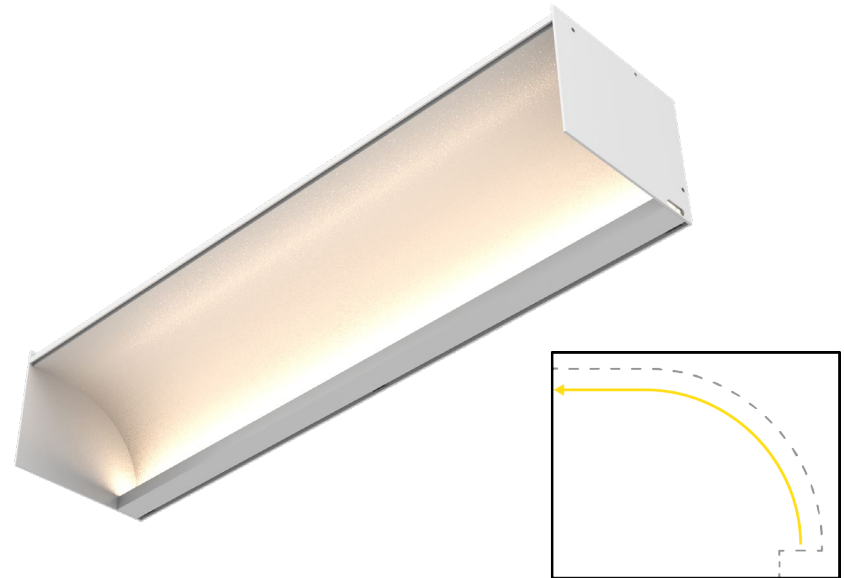
Round Opening
Mud-In End Cap



ALS500T-SWM | RECESSED PERIMETER INDIRECT LIGHTING



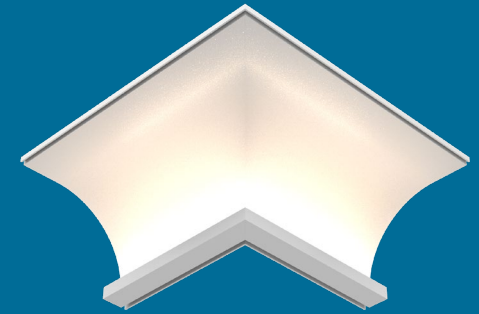
- Indirect, recessed, linear lighting system with approximately 4-3/16" visible opening that creates a cove.
- Reflector ends at the top of the wall and creates a cove effect.
- Trim options allow integration into dropped hard ceiling or T-Bar grid.



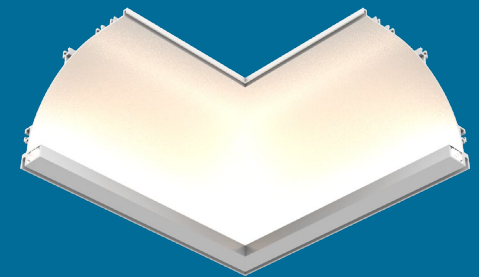
ALS500T-SWM | RECESSED PERIMETER INDIRECT LIGHTING



ALS500T-SWM | RECESSED PERIMETER INDIRECT LIGHTING



Internal Mitered Corner



External Mitered Corner

COLOR TUNING VARIATIONS

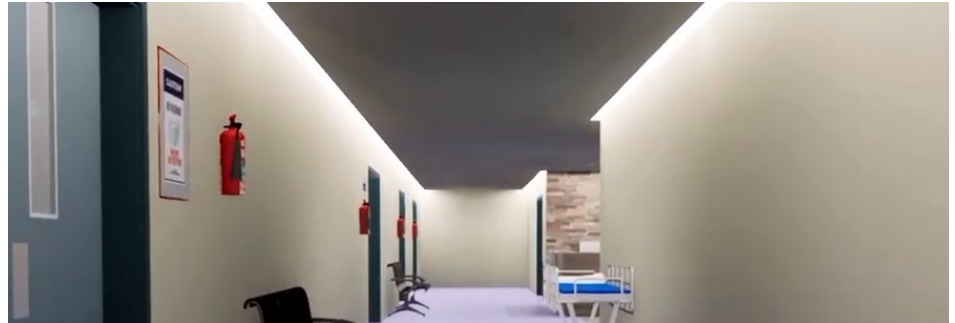
Our Color Tuning options offer a wide range of color temperatures that will illuminate an environment with the right color temperature needed.



CALI LIGHTING DEMONSTRATIONS

HEALTHCARE LIGHTING

- ALS500T-RMW
- ALS500T- DBR
- ALS500T-SWM



OFFICE LIGHTING

- ALS500T-RMW
- ALS500T-SWM
- ALS500T-DBR



OFFICE LIGHTING

- ALS500T-DBR



CALI

CALIFORNIA ACCENT LIGHTING, INC.

2820 E. Gretta Lane, Anaheim, CA 92806

ph. 800.921.CALI (2254) | fx. 714.535.7902 | info@calilighting.com | calilighting.com

© CALI. All rights reserved. CALI reserves the right to make changes or withdraw specifications without prior notice.

